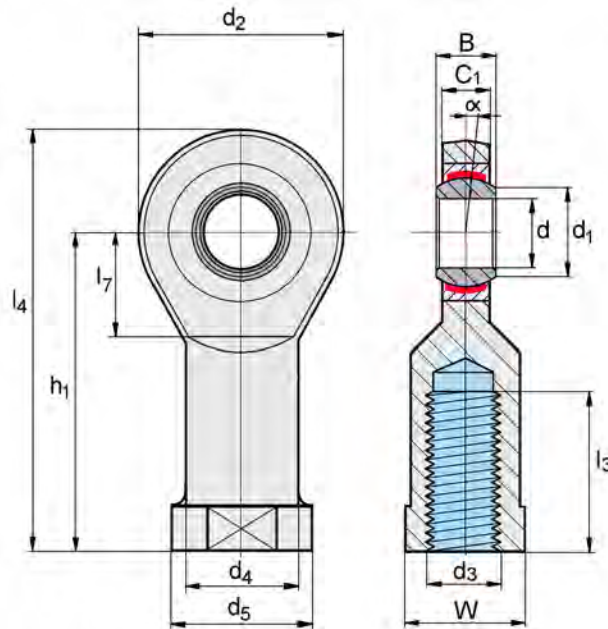


Lagerpaarung:
Stahl auf PTFE-Metallgewebe, wartungsfrei



Maßreihe E
Anschlußmaße nach DIN/ISO 12240-4

Gelenkkugel:
Wälzlagerstahl, gehärtet, geschliffen und poliert

HOCHLEISTUNGS-GELENKKÖPFE MIT INTEGRIERTEM GLEITLAGER

| HEYD-BESTELL-NR. | | Abmessungen in mm | | | | | | | | | | | | | Kippwinkel | Tragzahlen | kg/Stk |
|------------------|----------|-------------------|----------------|----|----------------|----------------|----------------|----------------|----------------|----------------|----------------|----------------|----------------|----|------------|----------------------------------|--------|
| R.-Gew. | L.-Gew. | d | d ₃ | B | C ₁ | d ₁ | d ₂ | d ₄ | d ₅ | h ₁ | l ₃ | l ₄ | l ₇ | W | α° | statisch C ₀ Standard | |
| EI 6-D | EIL 6-D | 6 | M6 | 6 | 4,4 | 8,0 | 21 | 10,0 | 13 | 30 | 11 | 40,0 | 12 | 11 | 13° | 8,2 | 0,021 |
| EI 8-D | EIL 8-D | 8 | M8 | 8 | 6,0 | 10,0 | 24 | 12,5 | 16 | 36 | 15 | 48,0 | 14 | 14 | 15° | 12,9 | 0,039 |
| EI 10-D | EIL 10-D | 10 | M10 | 9 | 7,0 | 13,0 | 29 | 15,0 | 19 | 43 | 20 | 57,0 | 15 | 17 | 12° | 17,6 | 0,061 |
| EI 12-D | EIL 12-D | 12 | M12 | 10 | 8,0 | 15,0 | 34 | 17,5 | 22 | 50 | 23 | 66,0 | 16 | 19 | 11° | 24,5 | 0,096 |
| EI 15-D | EIL 15-D | 15 | M14 | 12 | 10 | 18,0 | 40 | 21,0 | 26 | 61 | 30 | 80,5 | 20 | 22 | 8° | 36,0 | 0,180 |
| EI 17-D | EIL 17-D | 17 | M16 | 14 | 11 | 20,0 | 46 | 24,0 | 30 | 67 | 34 | 89,0 | 23 | 27 | 10° | 45,0 | 0,220 |
| EI 20-D | EIL 20-D | 20 | M20x1,5 | 16 | 13 | 24,0 | 53 | 27,5 | 35 | 77 | 40 | 102,0 | 25 | 30 | 9° | 60,0 | 0,350 |
| EI 25-D | EIL 25-D | 25 | M24x2 | 20 | 17 | 29,0 | 64 | 33,5 | 42 | 94 | 48 | 124,0 | 31 | 36 | 7° | 83,0 | 0,640 |
| EI 30-D | EIL 30-D | 30 | M30x2 | 22 | 19 | 34,0 | 73 | 40,0 | 50 | 110 | 56 | 145,0 | 37 | 41 | 6° | 110,0 | 0,930 |
| EI 35-D | EIL 35-D | 35 | M36x3 | 25 | 21 | 39,0 | 82 | 47,0 | 58 | 125 | 60 | 165,5 | 42 | 50 | 6° | 146,0 | 1,300 |
| EI 40-D | EIL 40-D | 40 | M39x3 | 28 | 23 | 45,0 | 92 | 52,0 | 65 | 142 | 65 | 187,5 | 48 | 55 | 7° | 180,0 | 2,000 |
| EI 45-D | EIL 45-D | 45 | M42x3 | 32 | 27 | 50,0 | 102 | 58,0 | 70 | 145 | 65 | 195,5 | 52 | 60 | 7° | 240,0 | 2,500 |
| EI 50-D | EIL 50-D | 50 | M45x3 | 35 | 30 | 55,0 | 112 | 62,0 | 75 | 160 | 68 | 215,5 | 60 | 65 | 6° | 290,0 | 3,500 |
| EI 60-D | EIL 60-D | 60 | M52x3 | 44 | 38 | 66,0 | 135 | 70,0 | 88 | 175 | 70 | 242,0 | 75 | 75 | 6° | 450,0 | 5,500 |